



# Living in Marrakesh

## Discover the charm of living in the Riad JMYA

The riad JMYA is a large house of the medina with a principal residence and adjoining apartment or "Douiria". Both have been renovated using traditional materials to restore the original architecture.

The main courtyard is planted with citrus trees and features a Moroccan fountain with jacuzzi. The courtyard, surrounded by a carved wooden balcony, offers cool temperatures in summer, while the warm winter weather can be enjoyed on the roof terrace.

You can relax in the Moroccan jacuzzi or try the traditional "hammam" to experience the daily routine of the "Marrakchis".

The principal residence can accommodate 8 people in four double rooms, each with private bathroom.

Dar Chemaâ is the "douiria" or an apartment where the family welcomed house guests in the past. This independent apartment is linked to the main riad Jmya through two double doors. This is a typical lay-out for large houses in Marrakech.

The Douiria has its own kitchen and courtyard with ornamental fountain. It offers accommodation for up to 4 people with 2 double rooms and one shared bathroom. The roof terrace provides an ideal facility for sun bathing or relaxing in the shade.

The housekeeper is at your service to prepare a variety of meals from a wide choice of menus. You can shop for food yourself or the housekeeper will be pleased to help.

## PRICE List 2015 in Euro

**Riad JMYA** capacity from 2 to 8 persons. (4 bedrooms with bathroom, 2 Living rooms, 1 Kitchen, 1 hammam, one fountain-jacuzzi, one roof terrace)

**Entire house renting with four bedrooms available (4 to 8 persons) without the Douiria**

Low Season	Middle Season	High Season
200 € /day	240 € /day	300 € /day

Hotel services included (housekeeping plus breakfast)

**Apartment Douiria "Dar Chemaâ"** capacity from 2 to 4 persons (2 bedrooms, one bathroom, 1 kitchen, 1 small lounge, one roof terrace, 1 in-house hammam )

**Apartment Douiria renting "Dar Chemaâ"**

Low Season	Middle Season	High Season
80 € /day	100 € /day	140 € /day

Hotel services included (housekeeping plus breakfast)

Low Season= 06/01 to 01/02 \*\*\*\* 14/06 to 12/09

Middle Season= 02/02 to 13/06 \*\*\*\* 13/09 to 30/11

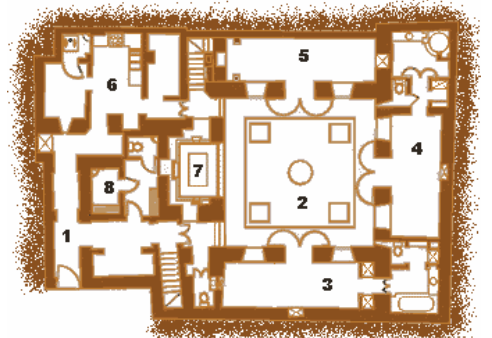
High season= 01/01 to 05/01 \*\*\*\* 19/12 to 31/12 (minimum 5 nights)

## RYAD JMYA

# رياض جميمة

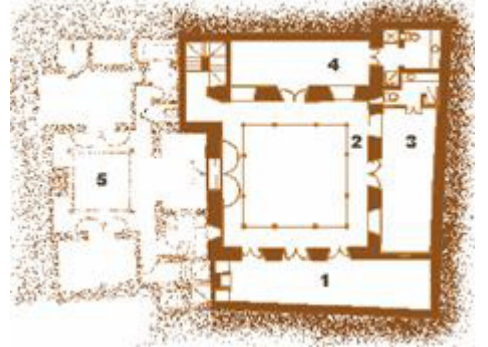
### Ground Floor (260 m<sup>2</sup>)

1. Entrance hall
2. Patio
3. Bedroom (one double bed 160 x 190) with bathroom
4. Bedroom (two beds 80 x 190) with shower room
5. Living and dining room with fireplace
6. Kitchen and pantry
7. Jacuzzi-fountain
8. Hammam



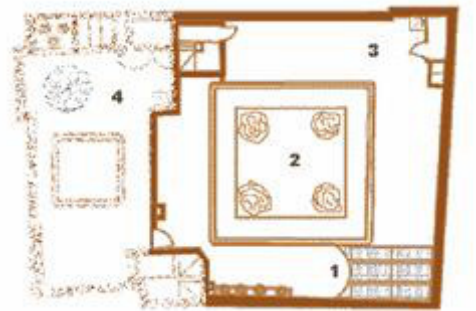
### First Floor (110 m<sup>2</sup>)

1. Large living room with fireplace and carved wooden ceiling
2. Balcony with wooden gallery
3. Bedroom (two beds 80 x 190) with shower room
4. Bedroom (two beds 80 x 190) with shower room
5. Small apartment or douiria (see dar Chemaa)



### Roof Terrace (130 m<sup>2</sup>)

1. Roof top living area (covered by canvas)
2. Open space over the patio
3. Terrace and open shower
4. Separate terrace (see dar Chemaa)



## DAR CHEMAA

# دار شمعة

### Apartment – Douiria First Floor (100 m<sup>2</sup>)

1. Entrance hall
2. Patio
3. Small lounge (Bhou)
4. Kitchen
5. Bedroom (one double bed 160 x 190)
6. Bedroom (two beds 80 x 190)
7. Bathroom (shower)
8. Separate patio (see ryad Jmya)



### Apartment – Douiria Roof Terrace (80 m<sup>2</sup>)

1. Terrace with conveniences
2. Open space over the patio
3. Separate terrace (see Ryad Jmya)

